



VACUUM CLEANERS - WET & DRY

# YP 1/23 W&D

# YP 1/27 W&D

POWER MAX

1350  
W

WATER LIFT

2480  
mmH<sub>2</sub>O

AIRFLOW

213  
m<sup>3</sup>/h

TANK CAPACITY

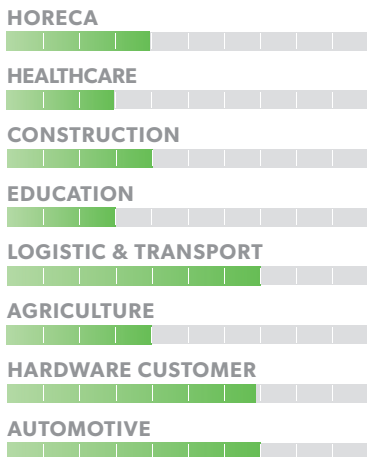
23 /27  
l

EXCLUSIVE FEATURES

- ▶ SANIFILTER
- ▶ STRONG HOOKS
- ▶ SEALENT FLOATER & INTEGRATED ANTIFOAM SYSTEM
- ▶ INNOVATIVE GASKET
- ▶ COMPACT DESIGN
- ▶ SWIVELLING WHEELS ON TROLLEY FOR EASY HANDLE
- ▶ HIGH POWER MOTOR
- ▶ 2-IN-1 BRUSH FOR WET OR DRY PICKING UP
- ▶ LIGHT-PLASTIC ACCESSORIES CHAIN
- ▶ INLET WITH SAFE LOCKING
- ▶ VERSIONS WITH STEEL TANK AVAILABLE



MOST FREQUENTLY USE



INNOVATIONS



SPECS



FLEXIBLE HOSE IS LOCKED SECURELY AND RELIABLY



INTEGRATED ANTI-FOAM SYSTEM



CABLE HOOK INTEGRATED ON POWERHEAD

## TECHNICAL DATA

		YP 1/23 W&D ASD013876	YP 1/27 W&D ASD014032
Code			
PERFORMANCE			
Usage		WET & DRY	WET & DRY
Motor		1 - single stage HV	1 - single stage HV
Power	W	1200 - 1350 max	1200 - 1350 max
Voltage	V	220 - 240	220 - 240
Water lift	mmH <sub>2</sub> O	2480	2480
Airflow	m <sup>3</sup> /h	213	213
Tank Capacity/Material	l	23/plastic	27/plastic
Cable length	m	8,5	8,5
Sound Pressure Level (EN 60704-1; EN 60704-2-1; IEC 60335-2-69)	dB(A)	70	70
Diameter of accessories	mm	36	36
Dimensions (LxWxH)	mm	380x380x600	380x380x630
Weight	Kg	8	8,5

## STANDARD EQUIPMENT

CODE: TBFX00704  
**FLEXIBLE HOSE 2 m  
Ø36 mm**



CODE: MPVR85407 (FOR 1 PC)  
**PLASTIC TUBE 50 cm  
(MACHINE COMES WITH 2PCS)**



CODE: LAFN85073  
**HANDLE WITH AIR  
REGULATOR Ø36 mm**



CODE: SPPV28242  
**FLAT LANCE Ø36 mm**



CODE: SPPV28243  
**ROUND BRUSH Ø36 mm**



CODE: SPPV33289  
**WET&DRY TOOL Ø36 MM  
(FOR YP 1/23 W&D)**



CODE: KTRI02142  
**FILTERING KIT  
(FOR YP 1/23 W&D)**



CODE: SPPV01771  
**DOUBLE USE BRUSH  
Ø36 mm  
(FOR YP 1/27 W&D)**



CODE: SPPV28245  
**WET FLOOR TOOL  
Ø36 mm  
(FOR YP 1/27 W&D)**



CODE: KTRI02133  
**DRY FILTERING KIT  
(FOR YP 1/27 W&D)**



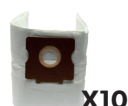
## OPTIONAL ACCESSORIES

CODE: KTRI03035  
**PAPER BAG SET OF 10 PCS**



X10

CODE: KTRI04795  
**MICROFIBER BAG SET  
OF 10 PCS**

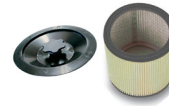


X10

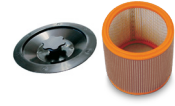
CODE: FTDP00222  
**PREFILTER PCB**



CODE: FTDP00654  
**WASHABLE CARTRIDGE  
KIT W/RING AND GASKET**



CODE: FTDP00657  
**HEPA CARTRIDGE KIT W/  
RING AND GASKET**



CODE: MPVR28723  
**FASTENING PLASTIC RING**



CODE: FTDP44260  
**WASHABLE POLYESTER  
CARTRIDGE (AVAILABLE  
AS SPARE PART) 3.000 cm<sup>2</sup>**



CODE: FTDP28844  
**HEPA H13 CARTRIDGE  
(AVAILABLE AS SPARE PART)  
3.000 cm<sup>2</sup>**



CODE: KTRI03005  
**FILTERING KIT SUITABLE  
FOR CARTRIDGE  
(FOR YP 1/27 W&D)**



CODE: FTDP28755  
**MESH FILTER**



CODE: MPVR11566  
**CREVICE TOOL 35 cm  
Ø36 mm**



CODE: MPVR11567  
**FLEXIBLE CREVICE TOOL  
60 cm Ø36 mm**



CODE: LAFN28238 (FOR 1 PC)  
**ALUMINIUM/PLASTIC  
TUBES 50 cm Ø36 mm**

